

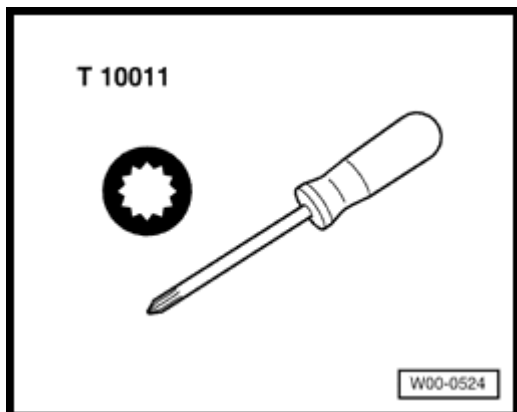
Volkswagen New Beetle

Body - Exterior

57 Front doors, Central locking system (Page GR-57)

- **[Front door](#)**
- [Carrier, removing and installing](#)
- [Door handle and lock, assembly overview](#)
- [Door handle, removing and installing](#)
- [Door lock knob, removing and installing](#)
- [Door lock, removing and installing](#)
- [Door, adjusting](#)
- [Door, removing and installing](#)
- [Front door, assembly overview](#)
- [lock cylinder housing, removing](#)
- **[Central locking and comfort systems, removing and installing](#)**

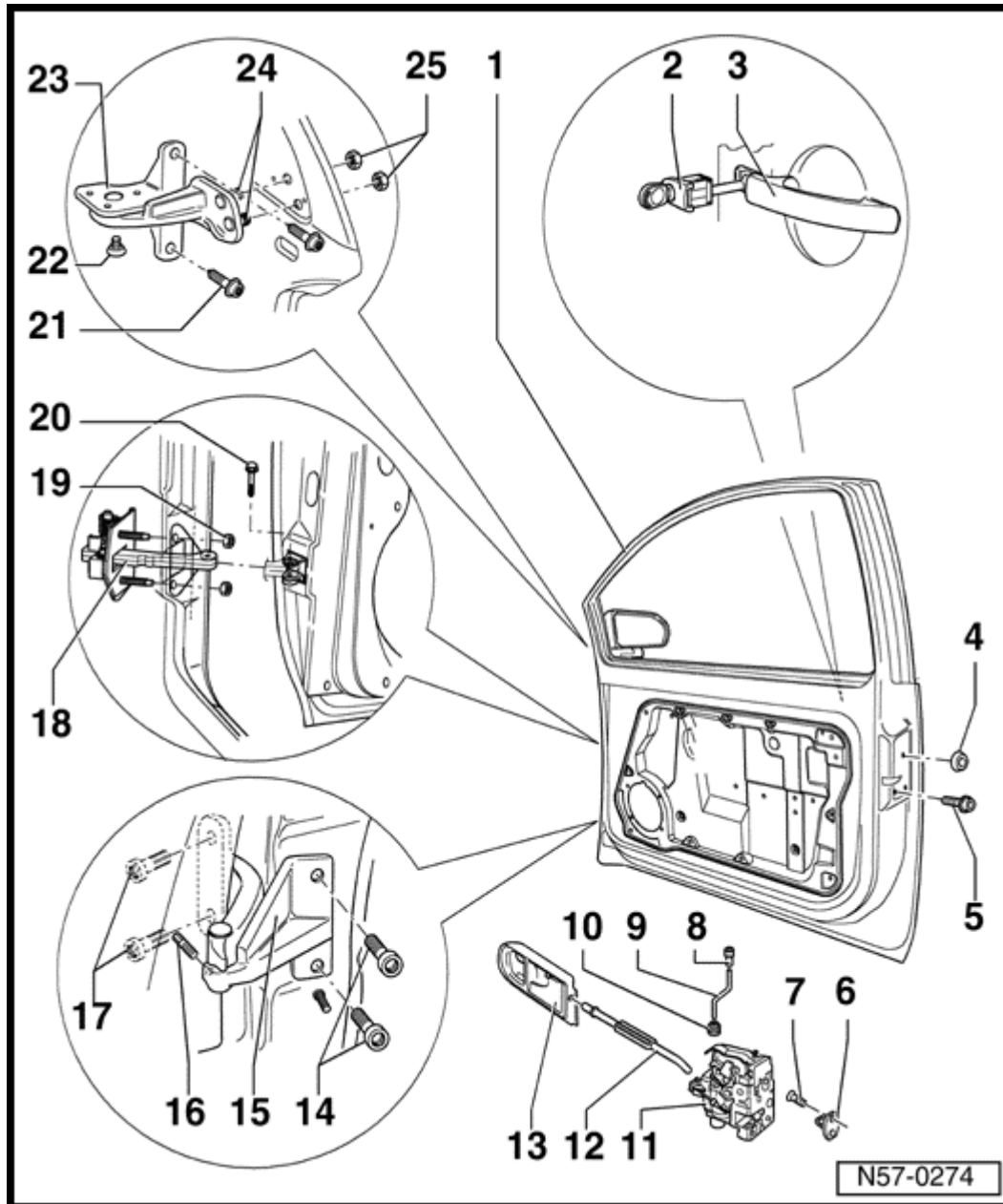
Special tools and equipment



A

- ◆ T 10011 Socket

Front door, assembly overview



Note:

The door hinge bolts (apart from -16- and -22-) and studs -24- must always be replaced after loosening.

1 - Door

- ◆ Removing and installing ⇒ [Page 57-6](#)

2 - Lock cylinder housing

- ◆ Removing ⇒ [Page 57-13](#)

3 - Door handle

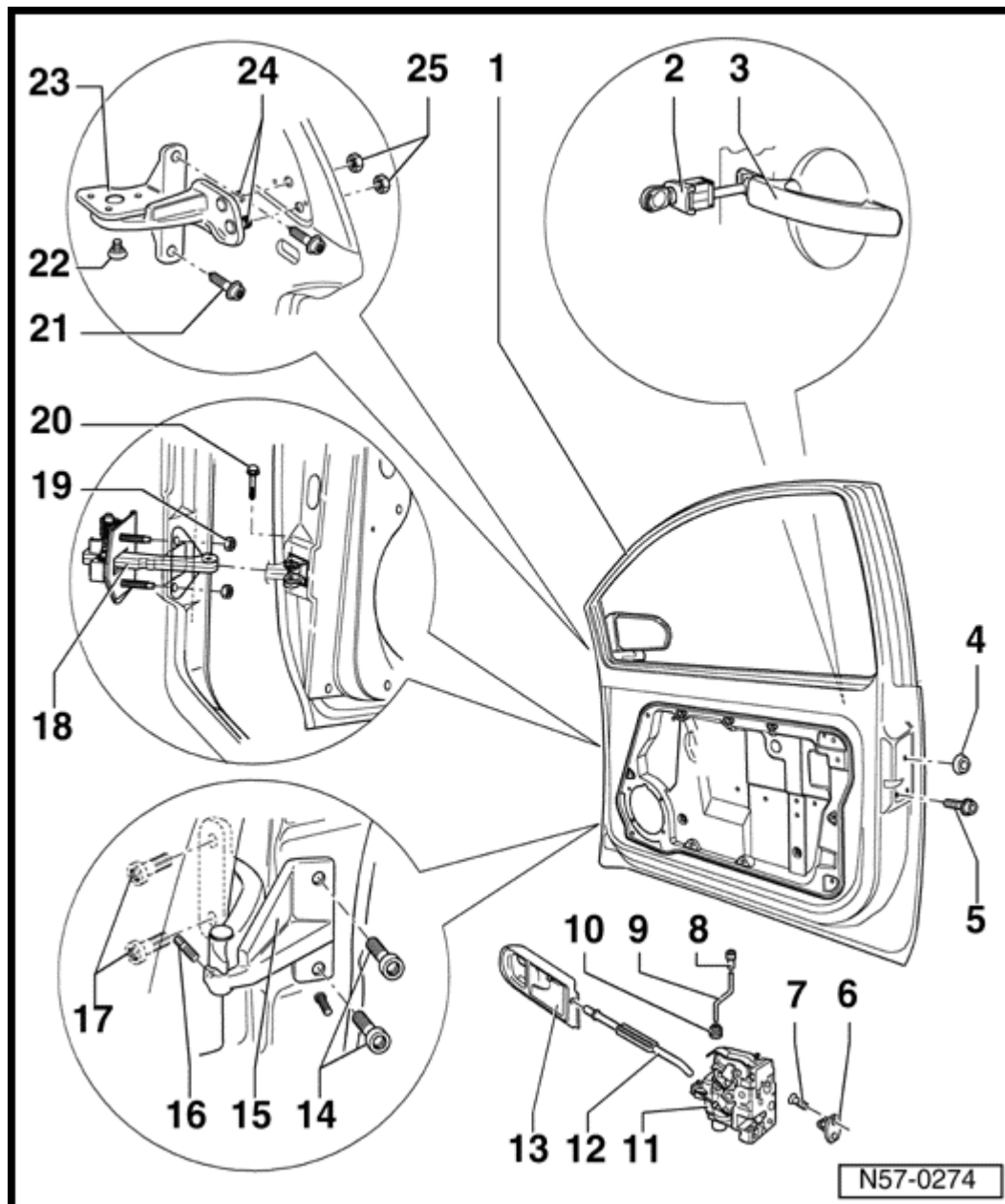
- ◆ Removing and installing ⇒ [Page 57-15](#)

4 - Cap

- ◆ 20 Nm (15 ft lb)
- Install with locking compound D 185 400 A2

6 - Lock plate

Volkswagen New Beetle
Body - Exterior
Front door (Page 57-3)



7 - Bolt

- ◆ 20 Nm (15 ft lb)

8 - Locking button

- ◆ Removing and installing ⇒ [Page 57-26](#)

9 - Locking rod

10 - Bellows

11 - Door lock

- ◆ Removing and installing ⇒ [Page 57-16](#)

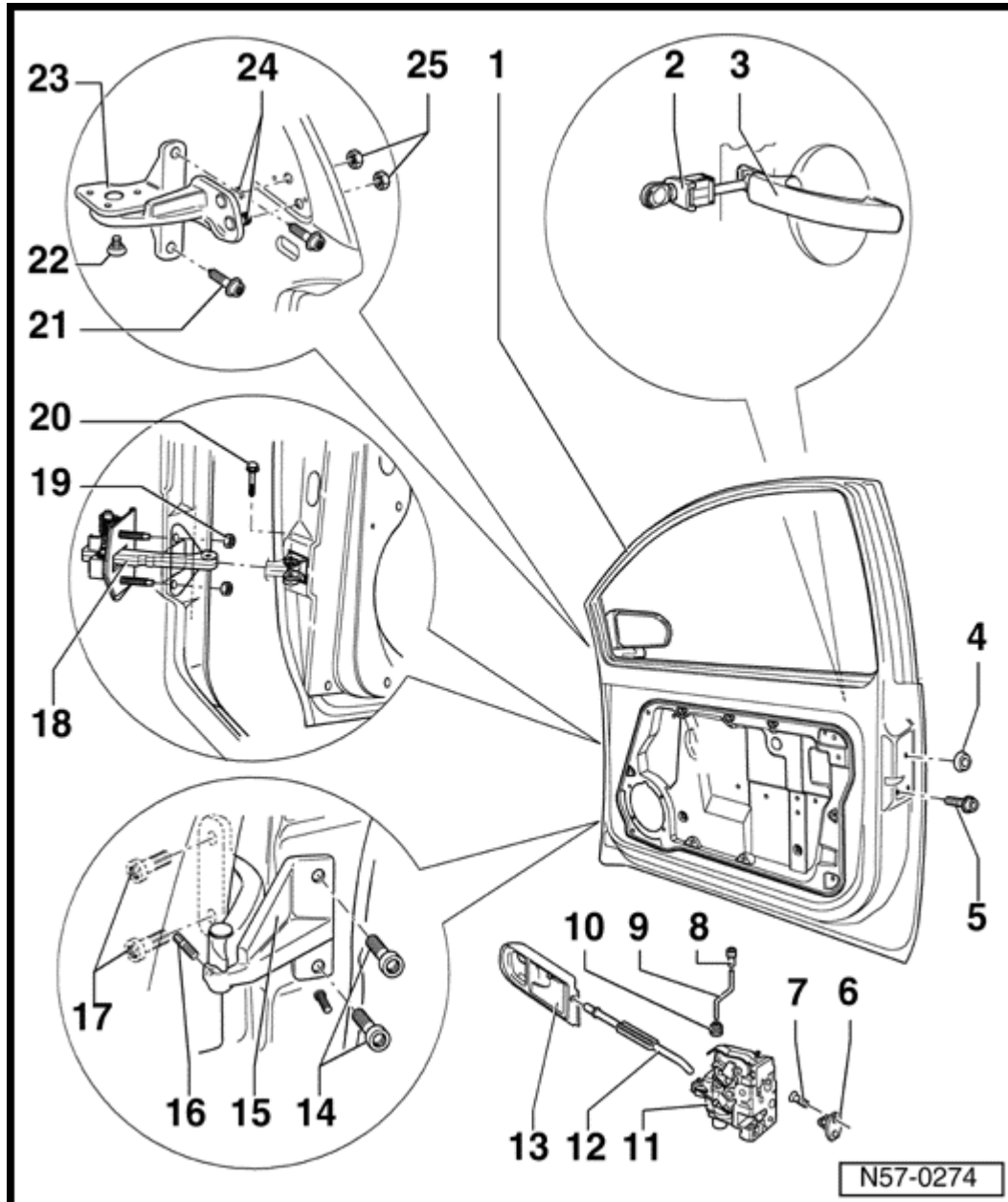
12 - Bowden cable

13 - Interior release handle

14 - Bolt

- ◆ 20 Nm (15 ft lb) plus 1/4 turn
- ◆ Always replace bolt after loosening
- ◆ Requires special tools 3320 and 3320/2

Volkswagen New Beetle
Body - Exterior
Front door (Page 57-4)



15 - Door hinge

- ◆ Hinge is split
- ◆ Always replace bolt - 14 - after loosening

16 - Grub screw

- ◆ 13 Nm (10 ft lb)

17 - Bolt

- ◆ 20 Nm (15 ft lb) + $\frac{1}{4}$ turn
- ◆ Always replace bolt after loosening

18 - Door stop

19 - Nut

- ◆ 9 Nm (80 in. lb)

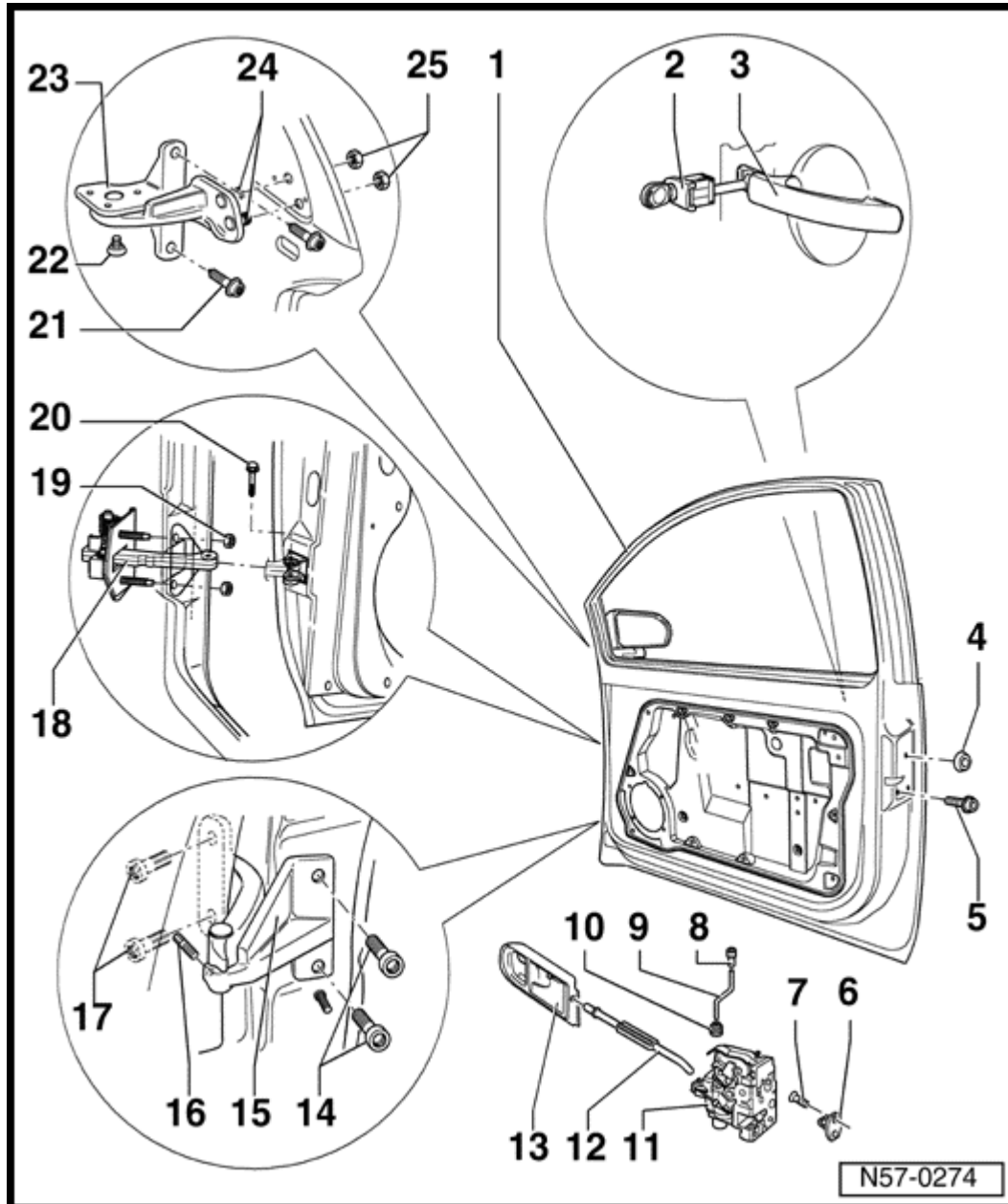
20 - Bolt

- ◆ 4.5 Nm (39 in. lb)

21 - Bolt

- ◆ 20 Nm (15 ft lb) + $\frac{1}{4}$ turn
- ◆ Always replace bolt after loosening

Volkswagen New Beetle
Body - Exterior
Front door (Page 57-5)



22 - Bolt

- ◆ 27 Nm (20 ft lb)

23 - Door hinge

- ◆ Hinge is split

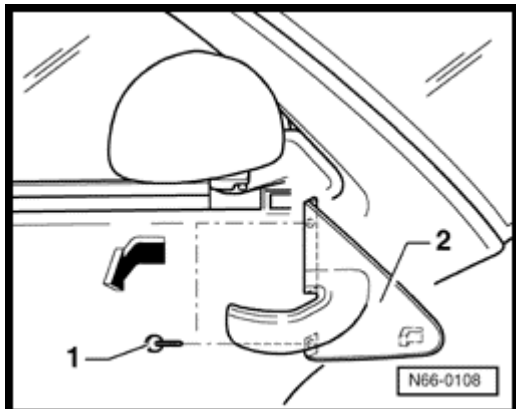
24 - Bolt

- ◆ Always replace bolt after loosening

25 - Nut

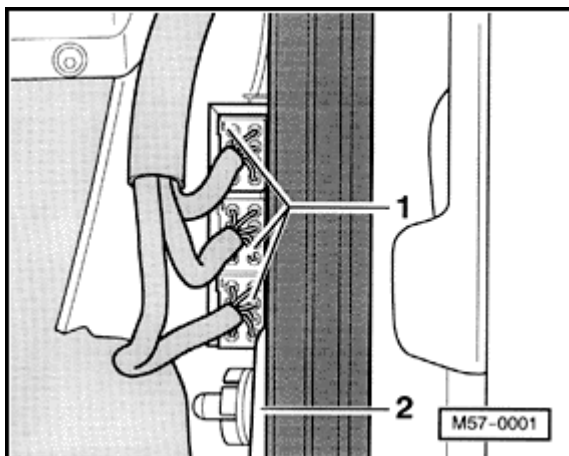
- ◆ 20 Nm (15 ft lb) + $\frac{1}{4}$ turn
- ◆ Always replace bolt after loosening

Door, removing and installing



A

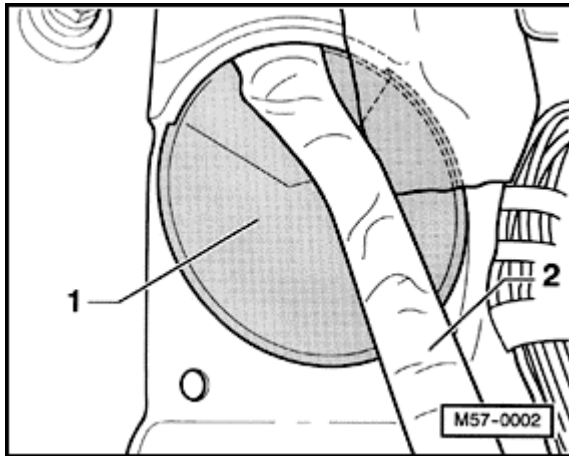
- Remove bolts - 1 - and swing corner trim out - arrow - to remove.
 - Remove hood release lever, left side ⇒ [Page 55-7](#) .
 - Remove A - pillar lower trim
- ⇒ [Repair Manual, Body-Interior, Repair Group 70](#) A - pillar lower trim, removing and installing.



A

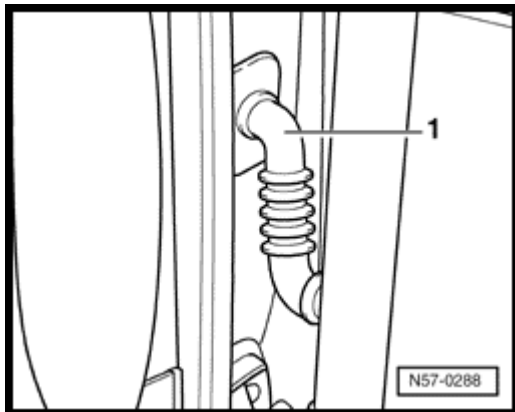
- Disconnect multi - pin connector - 1 - on A - pillar - 2 - .

Volkswagen New Beetle
Body - Exterior
Front door (Page 57-7)



A

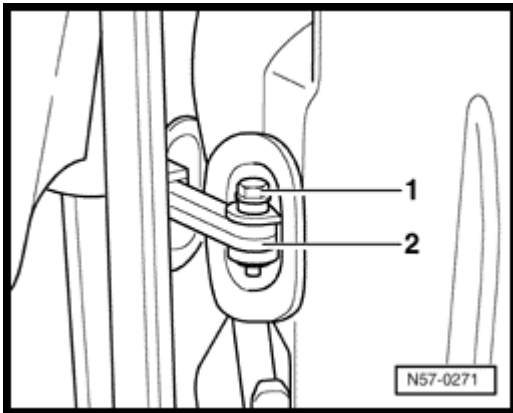
- Take cover -1- for wiring harness -2- out of body opening in the inner A pillar.



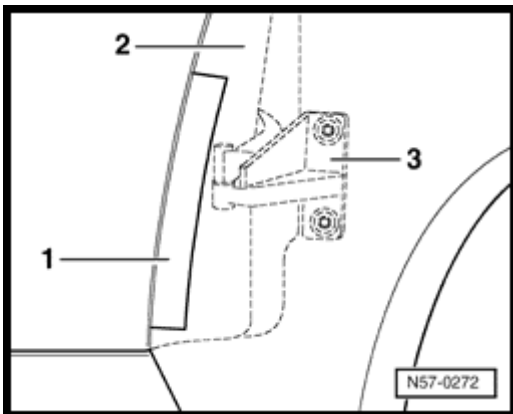
A

- Remove wiring harness boot - 1 - , between door and A - pillar.

Volkswagen New Beetle
Body - Exterior
Front door (Page 57-8)

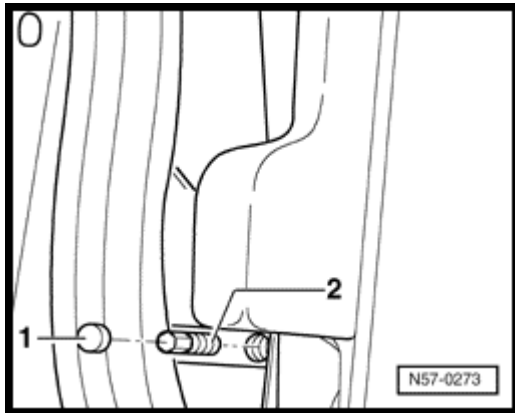


- Remove bolt - 1 - from door stop.

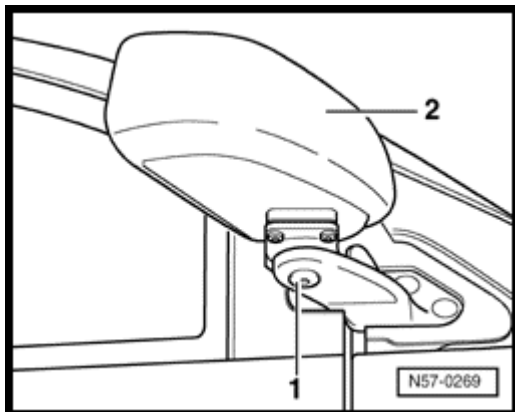


- Apply tape - 1 - (textile reinforced adhesive) to fender - 2 - to avoid paint damage at lower hinge area - 3 - .

Volkswagen New Beetle
Body - Exterior
Front door (Page 57-9)



- Remove cap - 1 - from grub screw at lower hinge.
- Remove grub screw - 2 - from upper and lower hinges.
- Tightening torque: 15 Nm (11 ft lb)



- Remove grub screw - 2 - from upper and lower hinges.
- Tightening torque: 27 Nm (20 ft lb)
- Lift door upward, out of hinge brackets.

Note:

Outside mirror - 2 - is removed with door.

Volkswagen New Beetle

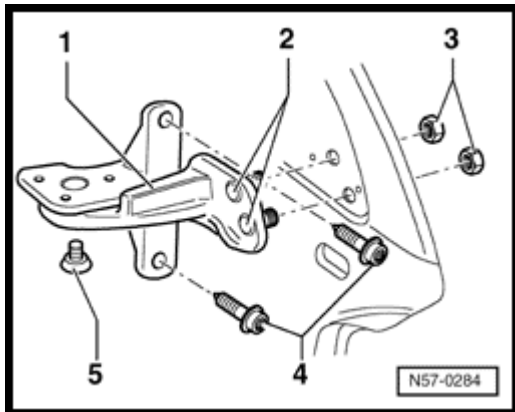
Body - Exterior

Front door (Page 57-10)

Door, adjusting

To ensure correct door adjustment loosen the hinges. Other measures, such as forcing the door upward, have no effect. Excess pressure will again cause the door to sag.

Upper door hinge

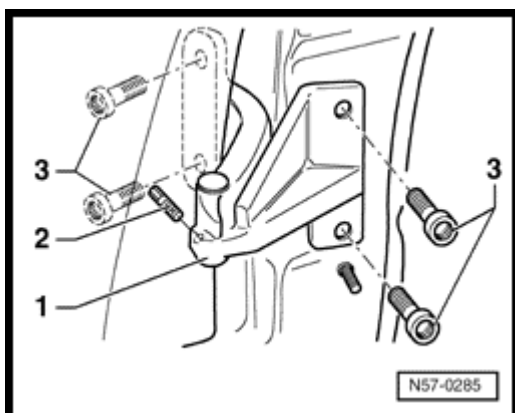


- 1- Door hinge
- 2- Stud
- 3- Nut 20 Nm (15 ft lb) + 1/4 turn
- 4- Bolt 20 Nm (15 ft lb) + 1/4 turn
- 5- Bolt 27 Nm (20 ft lb)

Note:

Replace bolts - 4 - each time they are loosened. Also, when loosening nuts - 3 - replace studs - 2 - .

Lower door hinge

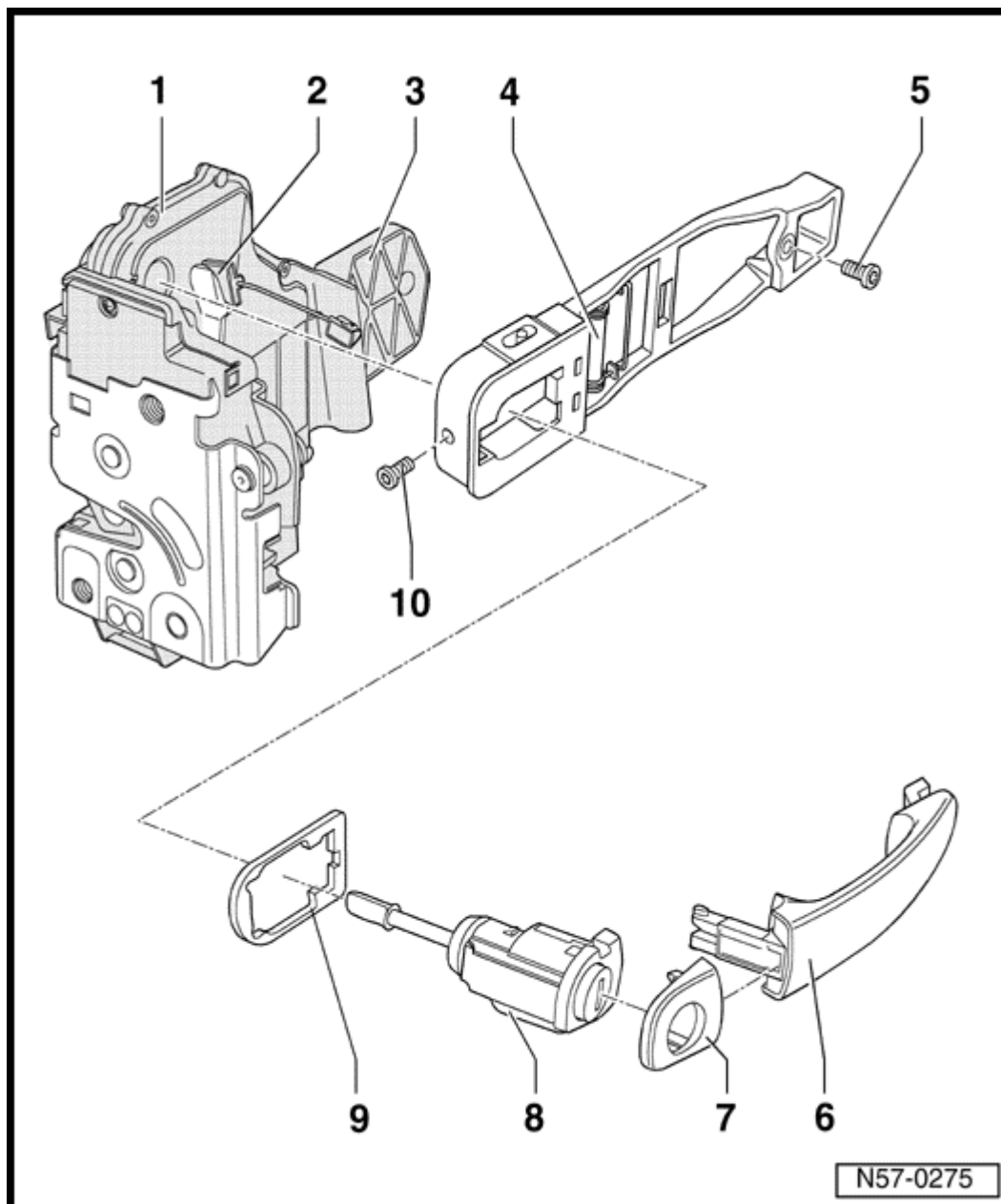


- 1- Door hinge
- 2- Grub screw
- 3- Bolt 20 Nm (15 ft lb) plus 1/4 turn (equires special tools 3320 and 3320/20)

Note:

Replace bolts - 3 - each time they are loosened.

Door handle and lock, assembly overview



1 - Door lock

- ◆ The door lock can only be removed with the assembly carrier.
- ◆ Removing and installing ⇒ [Page 57-16](#)

2 - Cable

- ◆ Lock release

3 - Retaining bracket

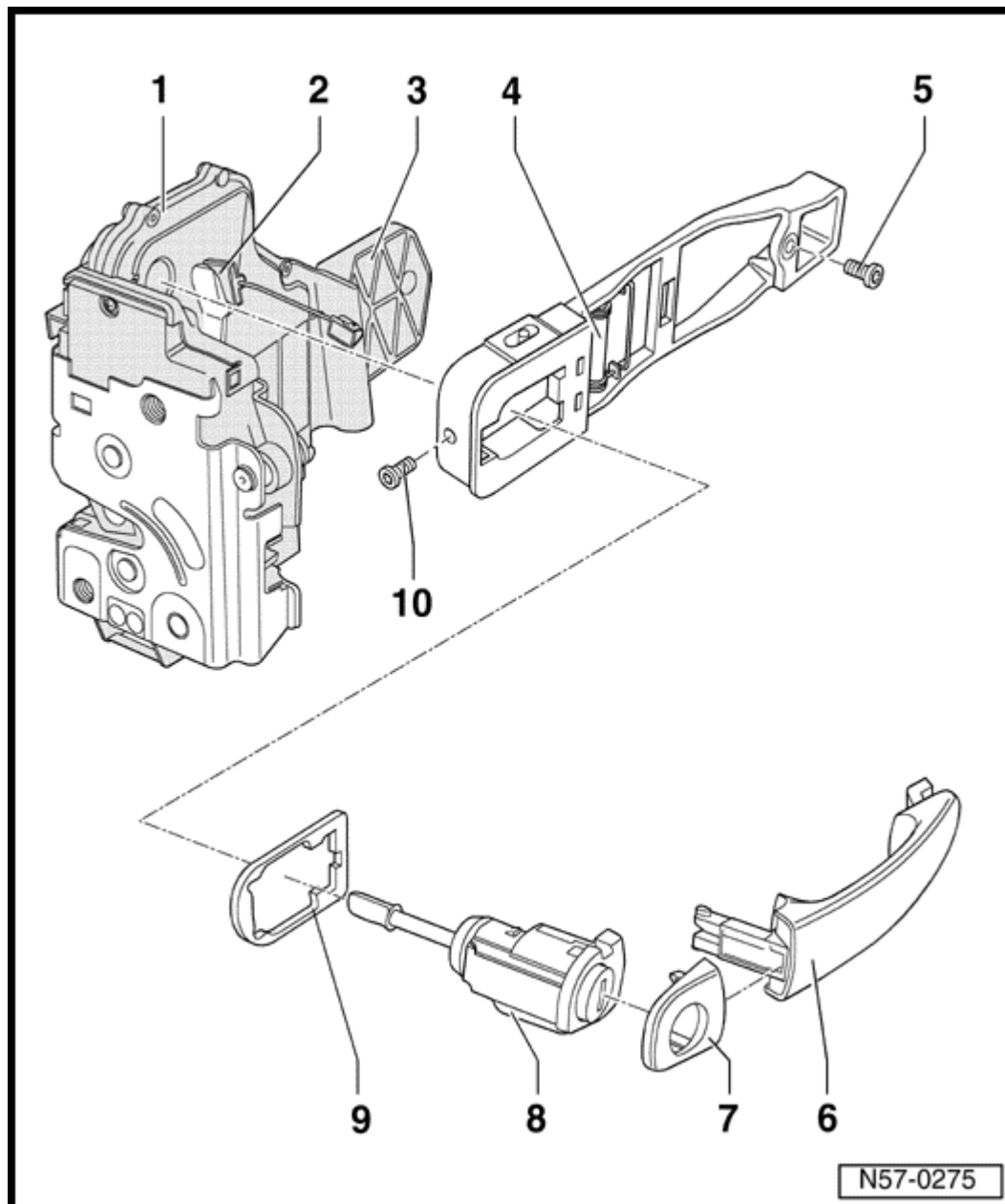
- ◆ Bolted and riveted to door lock
- ◆ Not supplied with door lock

4 - Bearing plate

- ◆ Removing and installing ⇒ [Page 57-15](#)

5 - Multi - point socket bolt

- ◆ Socket insert T 10011
- ◆ 8.5 Nm (76 in. lb)



6 - Door handle

- ◆ Removing and installing ⇒ [Page 57-15](#)

7 - Cover (trim)

8 - Lock cylinder housing

- ◆ Removing ⇒ [Page 57-13](#)
- ◆ Lock cylinder is not supplied individually

9 - Gasket

- ◆ Plastic

10 - Multi - point socket screw

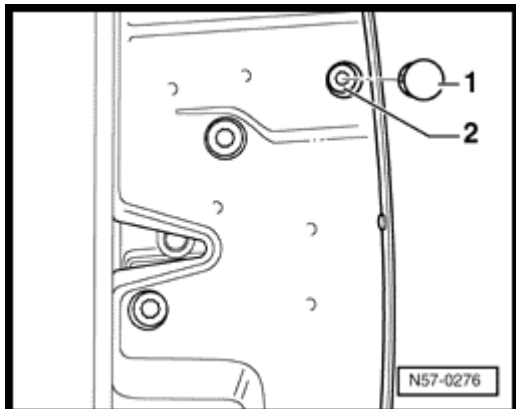
- ◆ Socket insert T 10011

- ◆ 8.5 Nm (76 in. lb)
- ◆ Loosening this screw releases the lock cylinder housing - 8 - , it can then be pulled out of bearing bracket - 4 -

CAUTION!

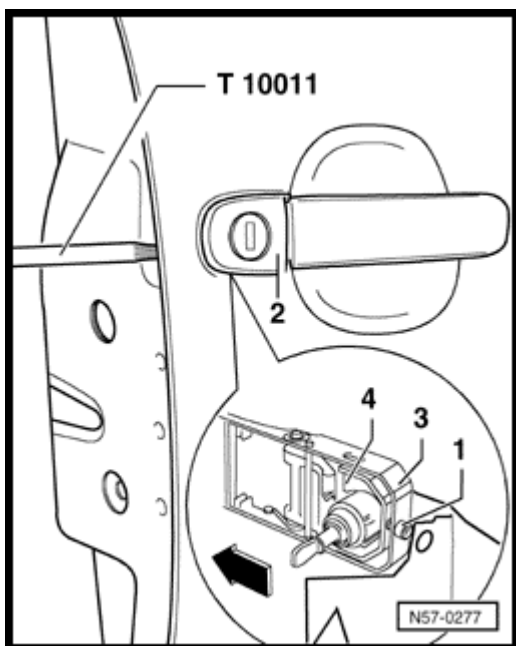
Loosen Multi - point socket screw - 10 - only, if screw is removed, the door lock must be removed to realign.

Lock cylinder housing, removing



A

- Carefully pry out plug - 1 - .



A

- Pull door handle and hold. Loosen screw - 1 - to stop with socket insert T 10011. This releases the lock cylinder housing.

CAUTION!

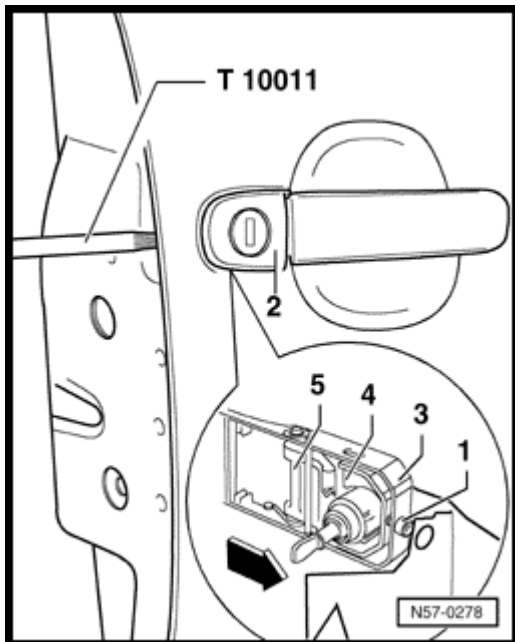
Loosen screw - 1 - only, if screw is removed, the door lock must be removed to realign.

- Pull lock cylinder housing - 2 - out of door handle bearing bracket at right angles.

Note:

The lock cylinder housing is released before the screw - 1 - is removed.

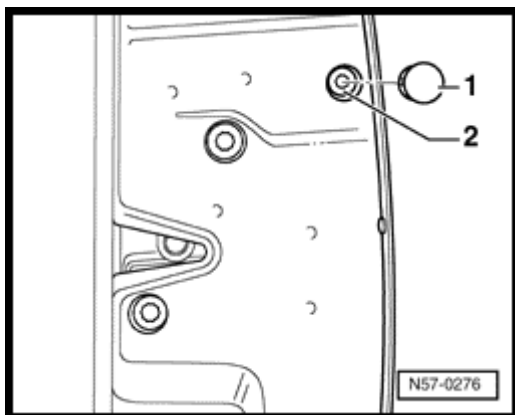
Volkswagen New Beetle
Body - Exterior
Front door (Page 57-14)



Note:

By moving release - 4 - simultaneously tensioned and locked spring lever - 5 - for the handle is released (audible noise).

- Check function to ensure correct operation, an incorrectly adjusted bowden cable will not open door.

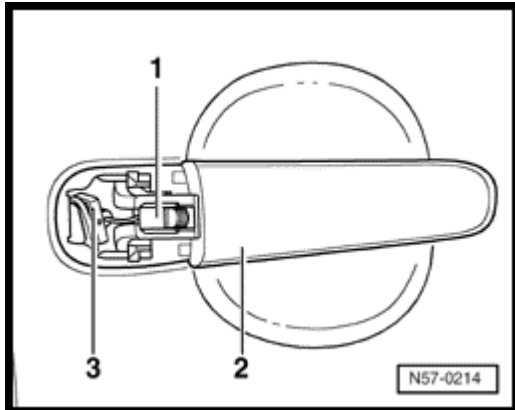


- Reinstall plug - 1 - .

Door handle, removing and installing

Removing from front left door and right door

- Removing lock cylinder housing ⇒ [Page 57-13](#) .



A

- Remove clip - 1 - from door handle.
- Swing door handle out of door. (pivot at front of handle)

Note:

By pivoting door handle out, door handle spring is tensioned and locked. (After door handle is installed spring tension is released).

Installing

- Swing (pivot) door handle into door.
- Engage clip - 1 - in door handle - 2 - .

Note:

When installing clip, do not pull lock operating lever - 3 - and press door handle - 2 - onto door panel.

- Install lock cylinder housing ⇒ [Page 57-13](#) .

Door lock, removing and installing

The window regulators, door lock and speaker are secured to the door assembly carrier.

The door lock can only be removed with the assembly carrier.

The assembly carrier can only be removed when the window regulator clamping brackets are removed. To do this lower door window to assembly holes in assembly carrier and loosen clamping brackets.

If power windows cannot be lowered then correct the condition first.

Interrogate comfort locking systems Diagnostic Trouble Code (DTC) memory (address word 46) with VAG 1551

⇒ [Repair Manual, Body-On Board Diagnostic \(OBD\), Repair Group 01](#); Comfort system.

Correct any electrical Diagnostic Trouble Code (DTC) before proceeding.

If the power window motor is the cause, Proceed as described on [page 57-17](#) .

Volkswagen New Beetle

Body - Exterior

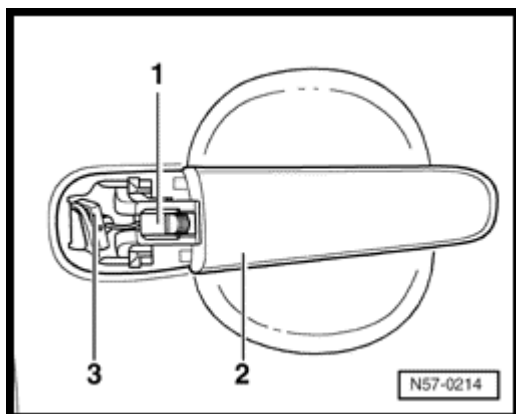
Front door (Page 57-17)

Removing

- Remove door trim

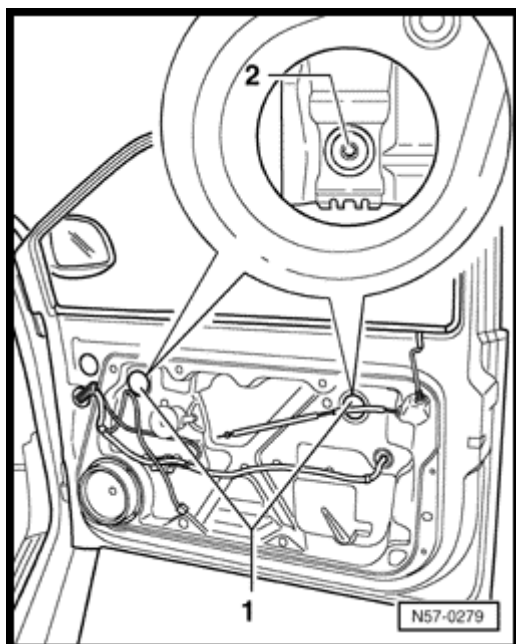
⇒ [Repair Manual, Body-Interior, Repair Group 70](#) Door trim, removing and installing

- Removing lock cylinder housing ⇒ [Page 57-13](#) .



A

- Remove clip - 1 - from door handle.



A

- Pry out cap - 1 - .
- Lower window until window bolts are accessible.

Note:

If work cannot continue due to Diagnostic Trouble Codes (DTC) related to the power window motor, remove motor to slide window down.

- Loosen bolts - 2 - and press clamps apart.

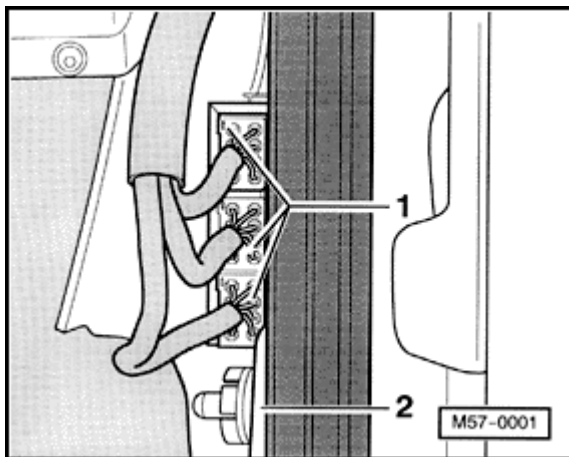
- Push window upward and secure in position (e.g. with adhesive tape).

Volkswagen New Beetle

Body - Exterior

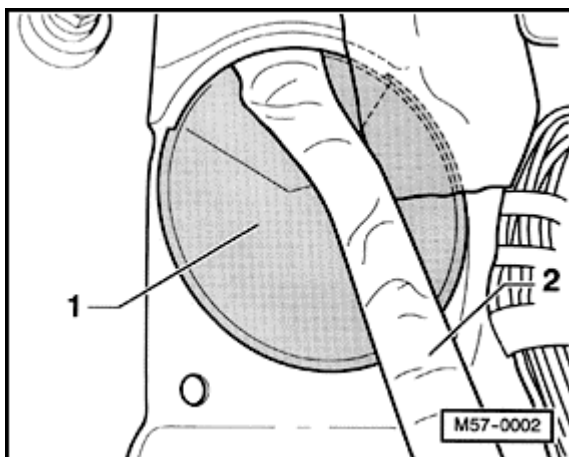
Front door (Page 57-18)

- Remove hood release lever ⇒ [Page 55-7](#) .
 - Remove lower A - pillar trim
- ⇒ [Repair Manual, Body-Interior, Repair Group 70](#) A - pillar lower trim, removing and installing



A

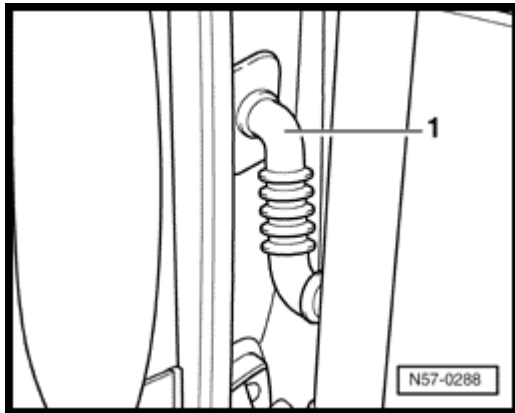
- Disconnect multi - pin connector - 1 - on A - pillar -2-.



A

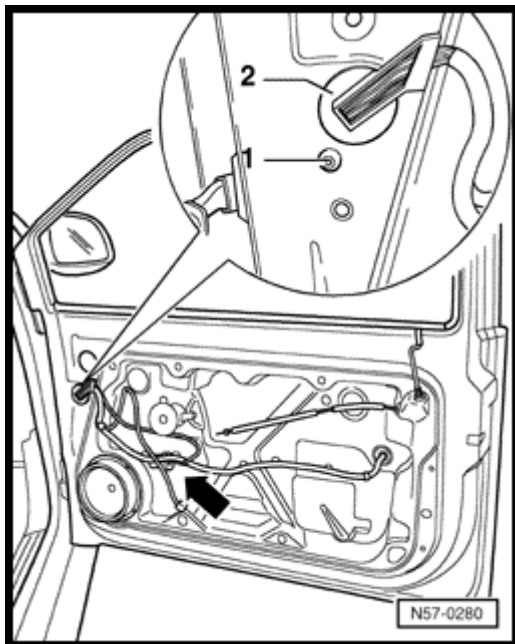
- Take cover -1- for wiring harness -2- out of body opening in the inner A pillar.

Volkswagen New Beetle
Body - Exterior
Front door (Page 57-19)



A

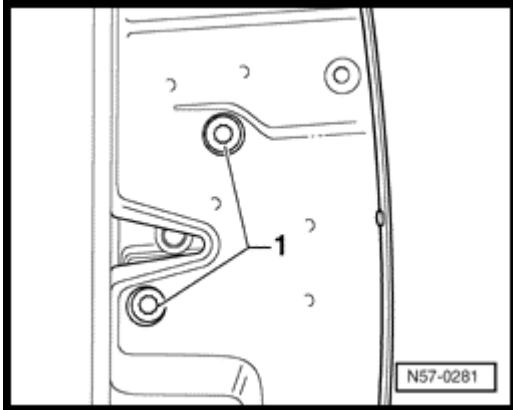
- Pull wire harness boot - 1 - out of A - pillar.



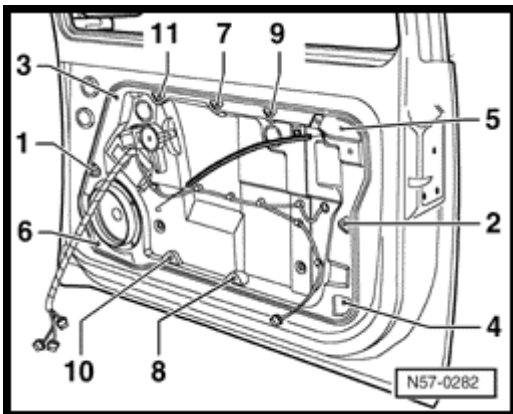
A

- Disconnect all connections - arrow - .
- Remove screw - 1 - and disconnect wiring harness guide panel - 2 - from door.
- Guide wiring harness with boot through door.

Volkswagen New Beetle
Body - Exterior
Front door (Page 57-20)

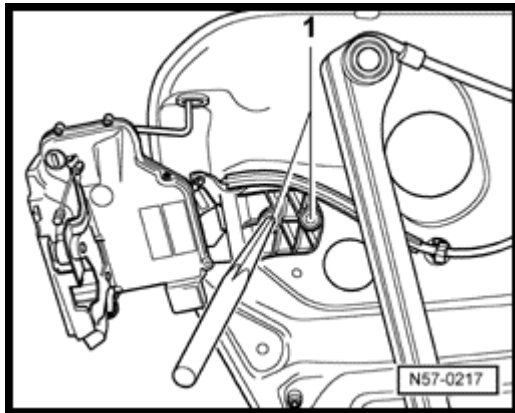


- Remove bolts - 2 - , torque: 20 Nm (15 ft lb).

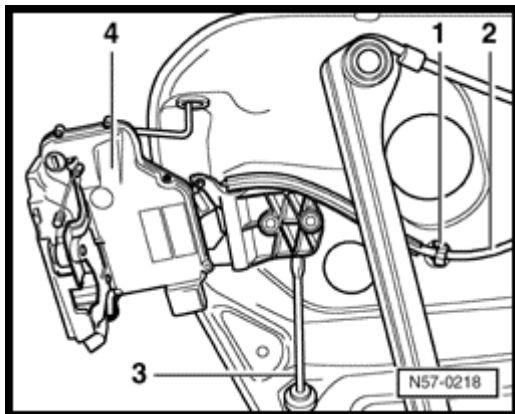


- Remove bolts - arrows - .
- Pull top of assembly carrier from door, lift and pull out of door toward hinges.
- Turn assembly carrier and pull connector off door lock.

Volkswagen New Beetle
Body - Exterior
Front door (Page 57-21)



- Drive out clips - 1 - with a drift.

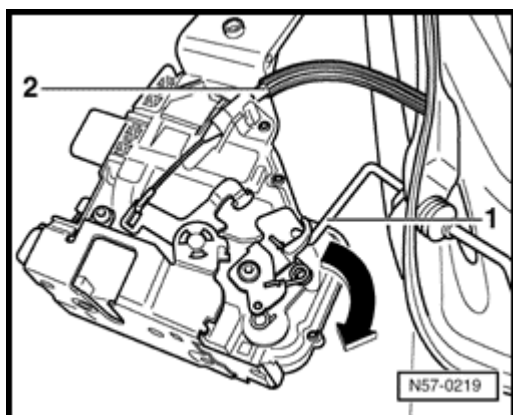


- Disconnect cable - 2 - from clip - 1 - .
- Carefully pry door lock off assembly carrier using a screwdriver - 3 - .

Note:

The retaining bracket is not part of the items supplied with the door lock. Secured to door lock with a bolt and a pop rivet.

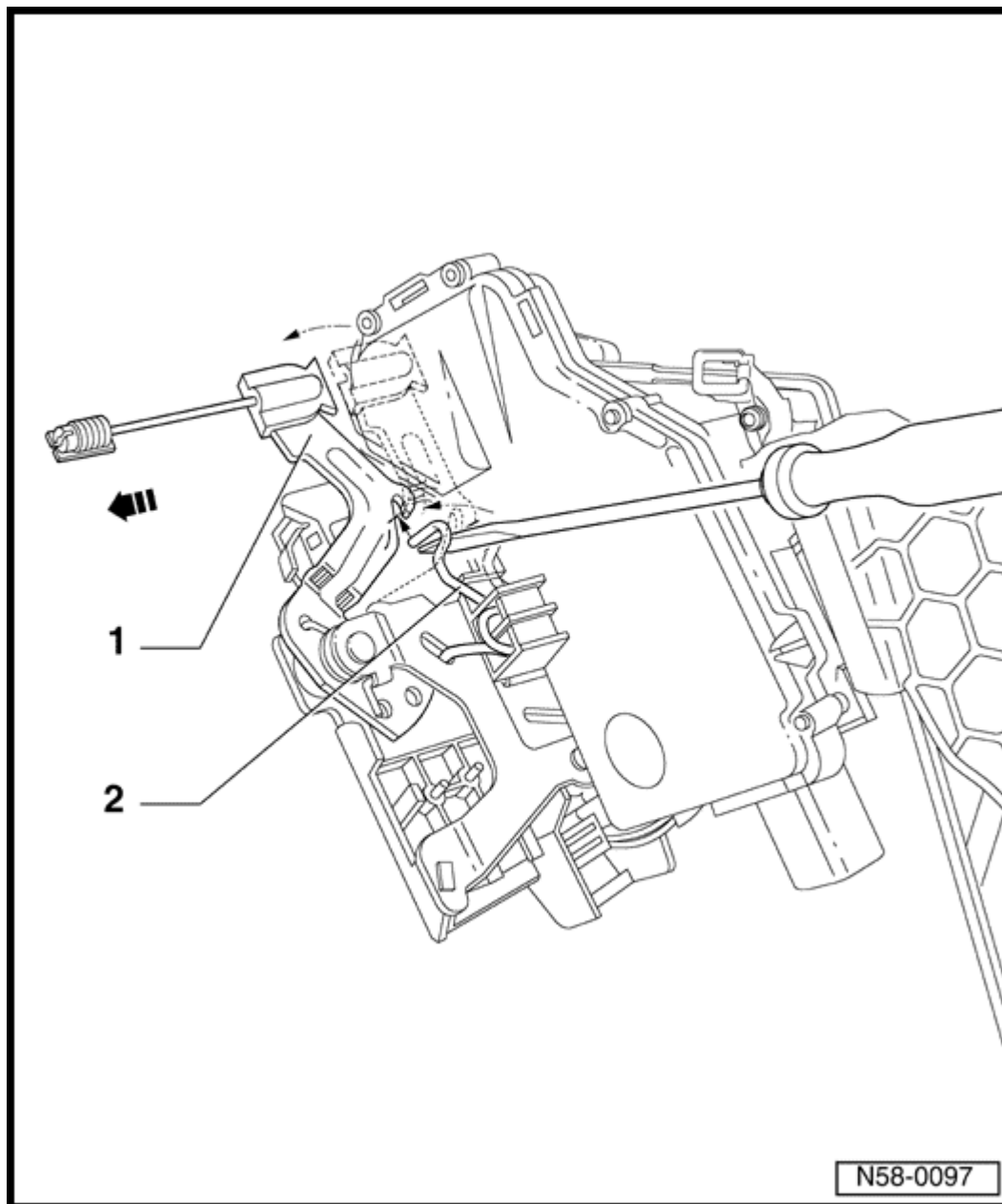
Volkswagen New Beetle
Body - Exterior
Front door (Page 57-22)



A

- Disconnect rod - 1 - by turning door lock in direction of arrow.
- Disconnect cable - 2 - .
- Turn cable nipple through 90° and remove from eye.

Installing



- Pull lock operating lever - 1 - in direction of arrow.
- Tension spring - 2 - which is secured on door lock, in direction of arrow with a screwdriver and hook locking lever into spring.

Note:

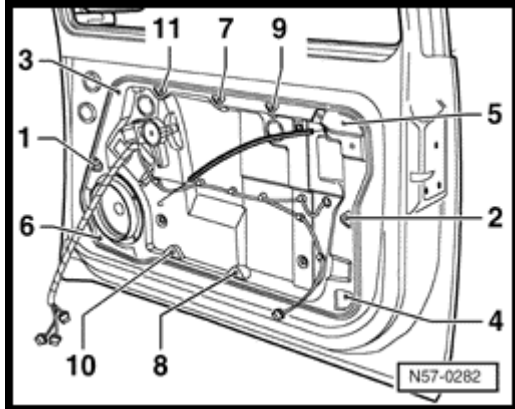
Connecting the operating lever activates the lock. Incorrectly attaching bowden cable (lock can release) is prevented.

Volkswagen New Beetle

Body - Exterior

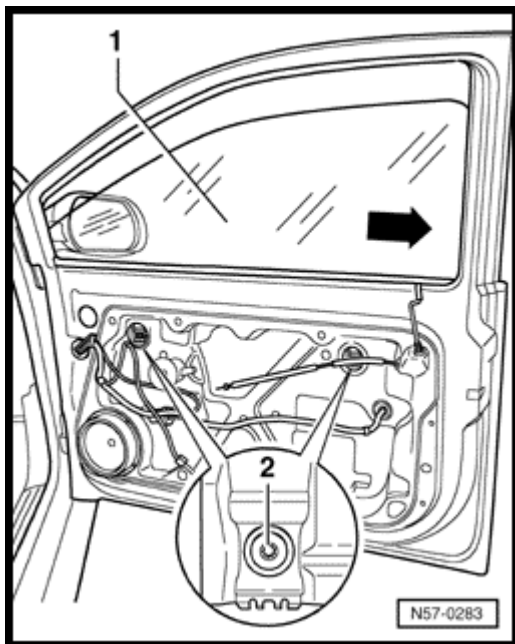
Front door (Page 57-24)

- Insert assembly carrier in door.



A

- Loosely install all bolts. Tighten bolts in sequence. Torque: 8 Nm (71 in. lb).



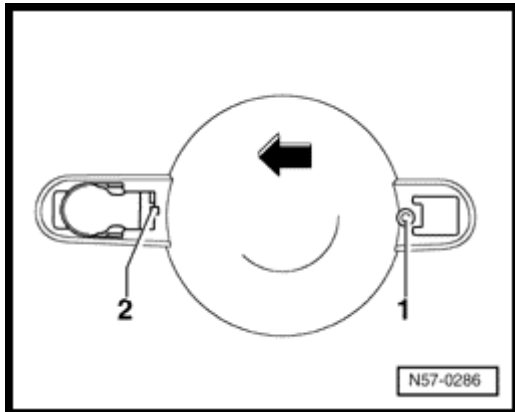
A

- Press door window glass - 1 - into window guide - arrow - and tighten clamps with bolts - 2 - 10 Nm (89 in. lb).
- Continue installation in reverse sequence.
- Check function.

Carrier, removing and installing

Removing

- Remove lock cylinder ⇒ [Page 57-13](#) .
- Remove door handle ⇒ [Page 57-15](#) .
- Remove component carrier ⇒ [Page 57-16](#) .

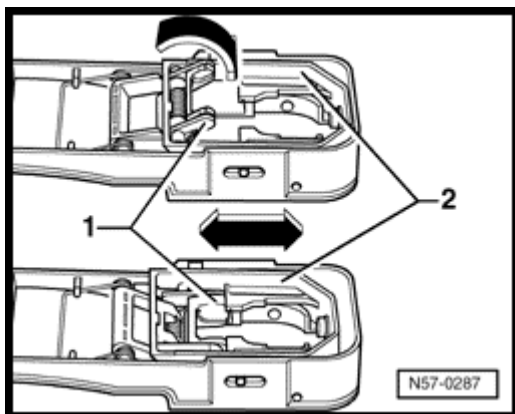


A

- Remove screw - 1 - , slide bracket in door rearward and disconnect retaining tab - 2 - in door cutout.

Installing

Reassemble in reverse sequence.



A

- Before installing bracket, check for correct spring lever - 1 - installation
Spring bracket - 1 - must be pushed against spring tension in the bracket and locked by lock - 2 - in this position.

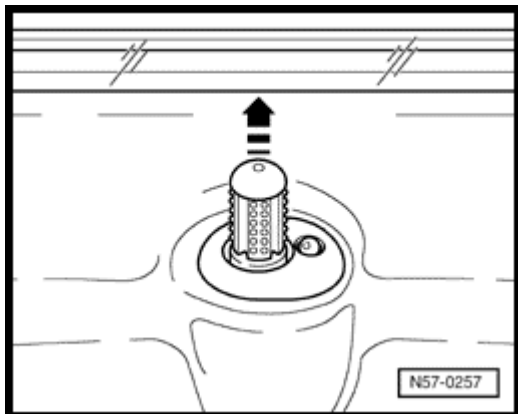
Door lock knob, removing and installing

CAUTION!

***The description for removing and installing the lock knob must be adhered to.
Not observing the sequence, may loosen the locking rods in the doors.***

Volkswagen New Beetle
Body - Exterior
Front door (Page 57-27)

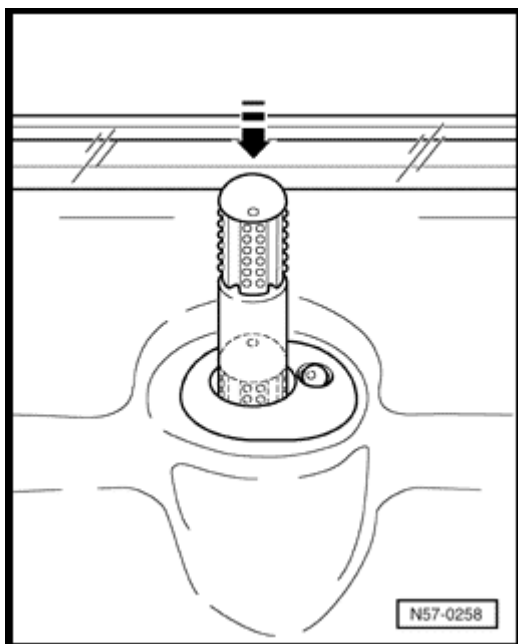
Lock knob, removing from left door



A

- Release lock knob by turning 180° counter - clockwise.
- Take lock knob off upward.

Lock knob, installing in left door



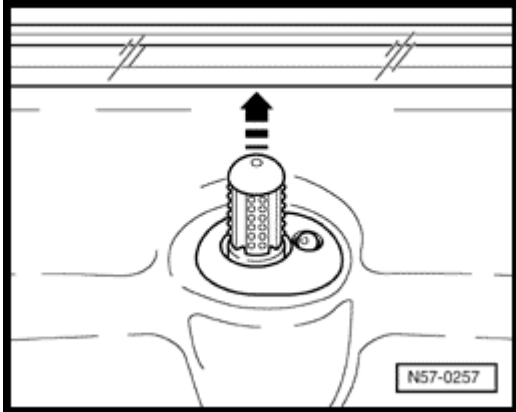
A

- Install lock knob on lock rod with mark (small dot on top) toward vehicle interior.
- Press lock knob onto lock rod until fluted section is flush with door trim.
- Then turn the lock knob 180° counter - clockwise.

Lock knob in "locked" position can project approx. 0...2 mm (0.078 in.) above door trim.

Volkswagen New Beetle
Body - Exterior
Front door (Page 57-28)

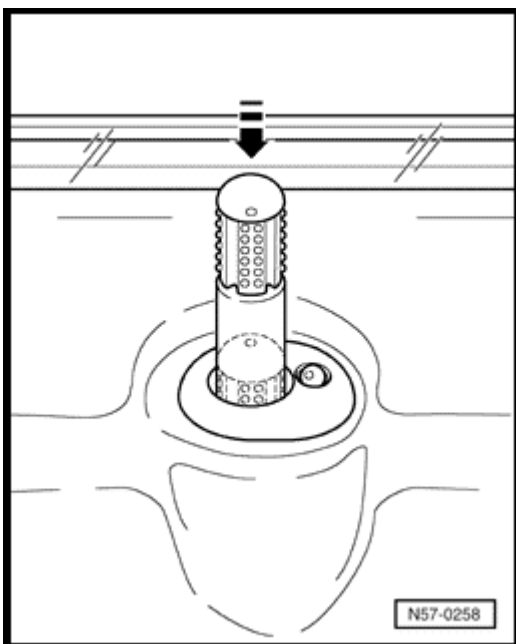
Removing from front left door and rear right door



A

- Release lock knob by turning 180° clockwise.
- Take lock knob off upward.

Installing to front left door and rear right door



A

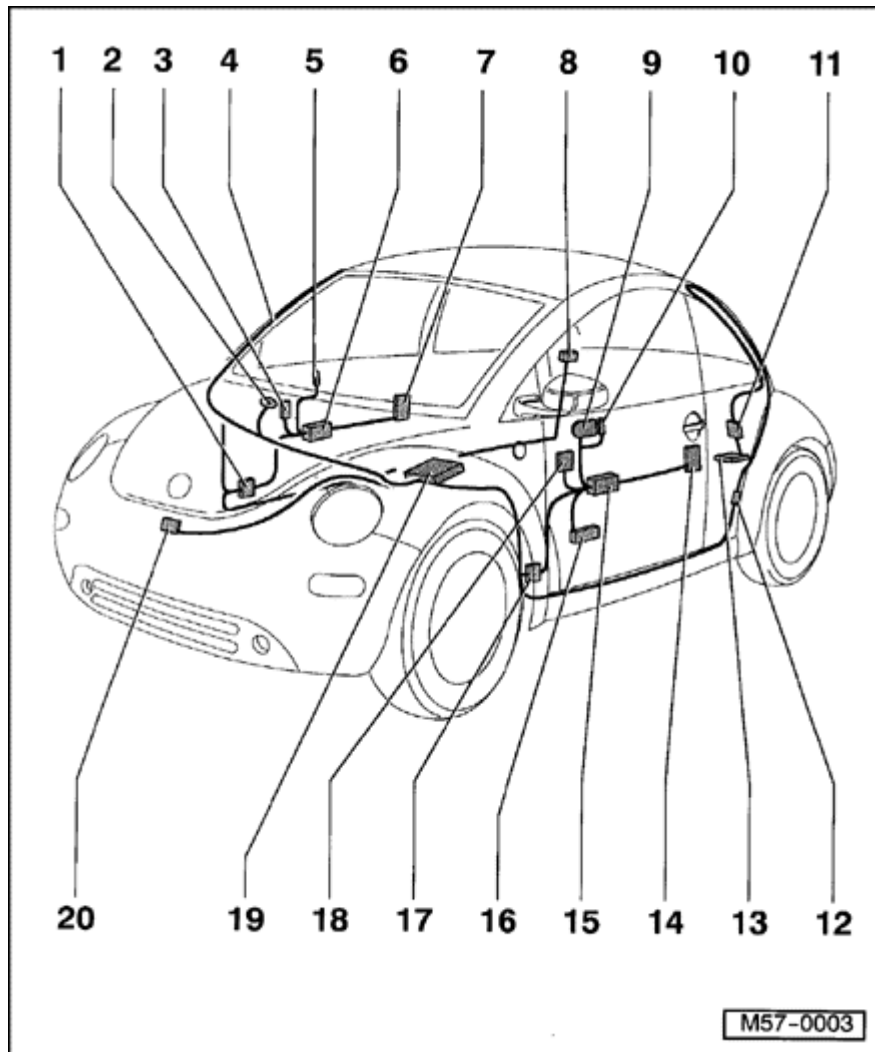
- Install lock knob on lock rod with mark (small dot on top) toward vehicle interior.
- Press lock knob on lock rod until fluted section is flush with door trim.
- Turn lock knob 180° clockwise.

Lock knob in "locked" position can project approx. 0...2 mm (0.078 in.) above door trim.

Volkswagen New Beetle

Body - Exterior

Central locking and comfort systems, removing and installing (Page 57-29)



1 - Coupling station

- ◆ Installation position: Lower A pillar cover

- Removing A pillar lower trim

⇒ [Repair Manual, Body-Interior, Repair Group 70](#) A - pillar lower trim, removing and installing

2 - Anti - theft alarm horn - H8 -

- ◆ Location: Right behind the plenum chamber closing cover

◆ Removing:

- Removing plenum chamber closing cover ⇒ [page 50-14](#)

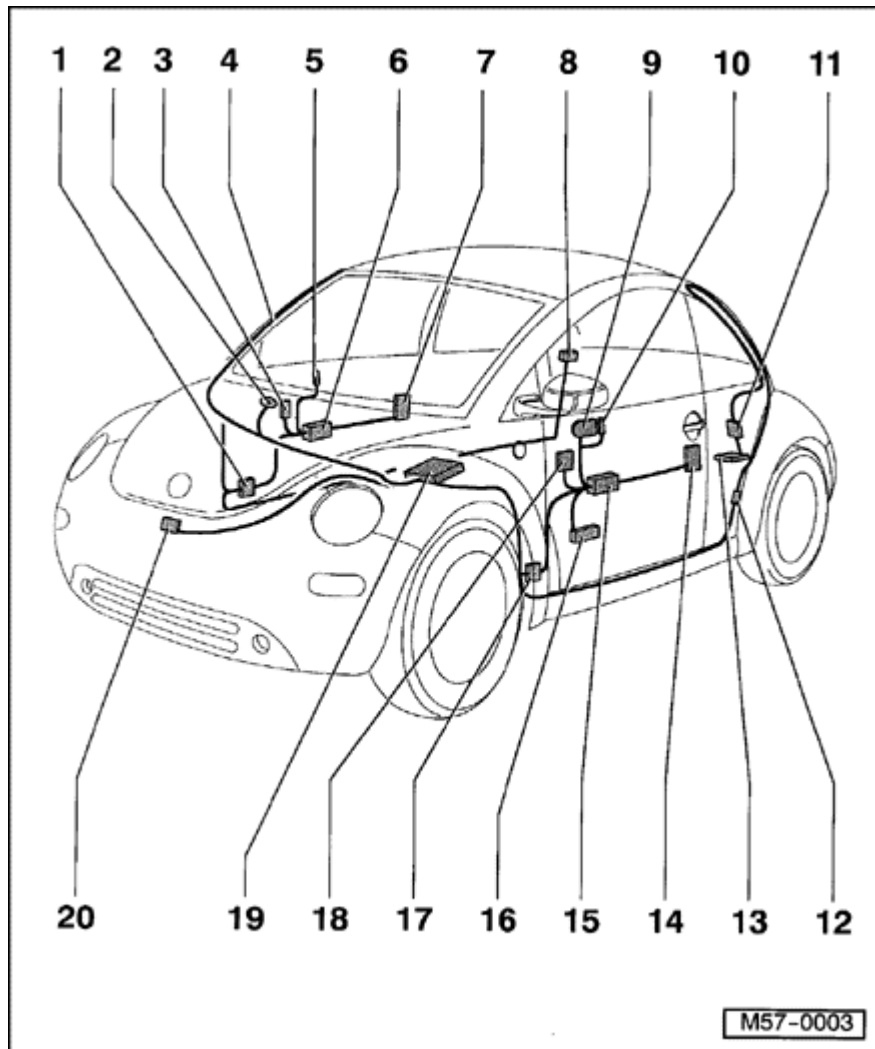
3 - Switch window regulator - E107 -

- ◆ For comfort system only

Volkswagen New Beetle

Body - Exterior

Central locking and comfort systems, removing and installing (Page 57-30)



4 - Antenna wire - R47 -

- ◆ Central Locking Anti - theft Warning System
- ◆ Under left A pillar trim

⇒ [Repair Manual, Body-Interior, Repair Group 70](#) Side panel trim, removing and installing

5 - Switch door lock - E198 -

- ◆ Interior lock (right side)

6 - Door control module - J387 -

- ◆ For comfort system only
- ◆ Integrated into power window motor (right side)
- ◆ Removing:

- Removing door trim

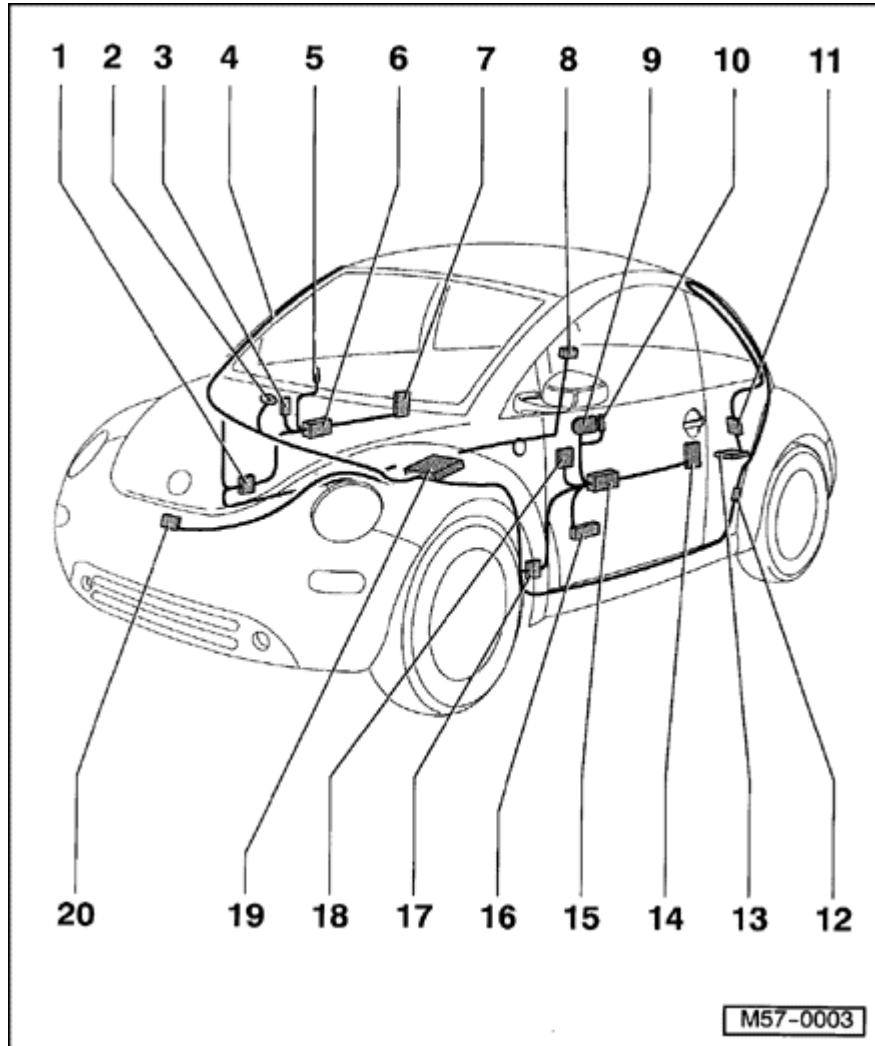
⇒ [Repair Manual, Body-Interior, Repair Group 70](#) Door trim, removing and installing

- Remove power window motor.

Volkswagen New Beetle

Body - Exterior

Central locking and comfort systems, removing and installing (Page 57-31)



7 - Door lock - F122 -

- ◆ Central locking
- ◆ Door lock is secured to assembly carrier (right side)
- ◆ Central locking is integrated into door lock module

⇒ [Repair Manual, Body-Interior, Repair Group 70](#) Door trim, removing and installing

- Remove door lock ⇒ [Page 57-16](#).

8 - Fuel tank fill door actuator remote release - V155 -

- ◆ Installation position: Under C pillar trim

⇒ [Repair Manual, Body-Interior, Repair Group 70](#) Side panel trim, removing and installing

- ◆ Removing ⇒ [Page 55-22](#)

9 - Mirror Switch - E43 - & - E48 -

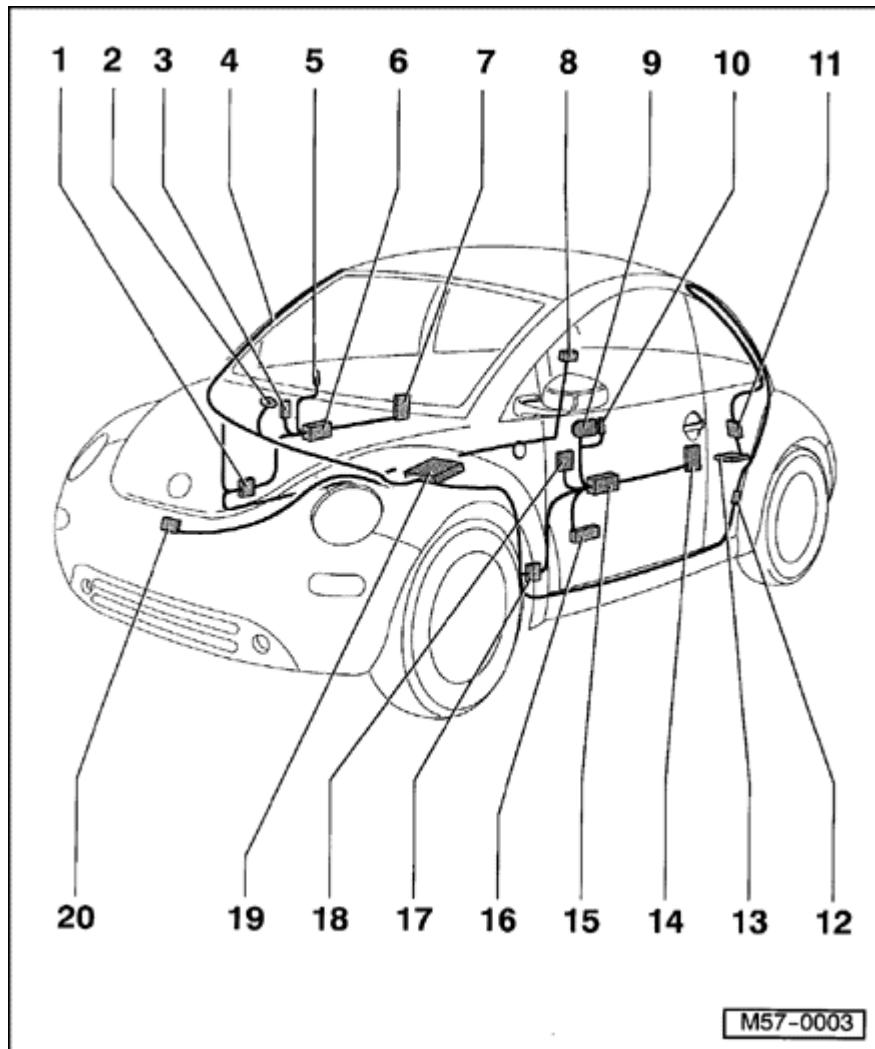
- ◆ Mirror adjustment switch - E43
- ◆ Mirror selector switch E48 -

10 - Switch interior lock - E150 -

Volkswagen New Beetle

Body - Exterior

Central locking and comfort systems, removing and installing (Page 57-32)



11 - Rear lid remote actuator - V151 -

- ◆ Bolted onto carrier
- ◆ Lock cylinder micro-switch is also located on carrier
- ◆ Lock cylinder can only be removed with carrier.
- ◆ Removing and installing ⇒ [Page 55-19](#).

12 - Coupling station

- ◆ Location: On left in luggage compartment

13 - Rear lid lock - V139 -

- ◆ Bolted to tailgate
- ◆ Removing:

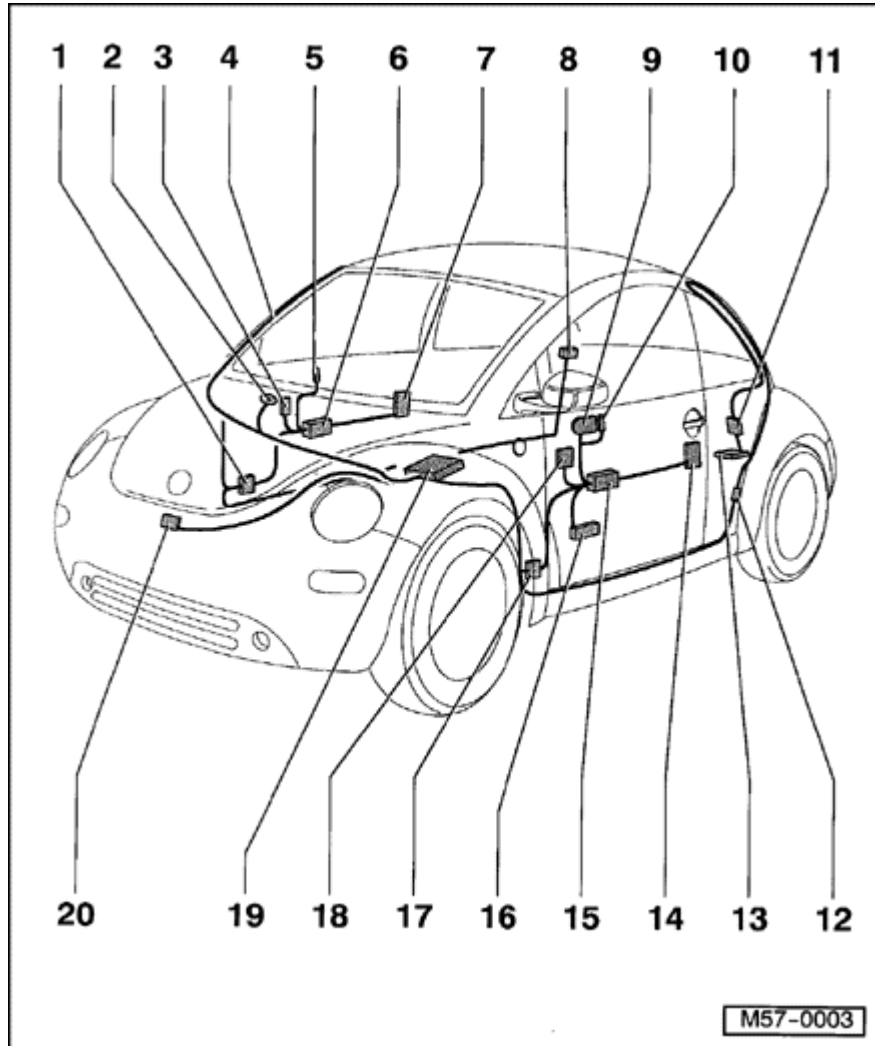
⇒ [Repair Manual, Body-Interior, Repair Group 70](#) Rear lid trim

- Remove tailgate lock ⇒ [page 55-16](#).

Volkswagen New Beetle

Body - Exterior

Central locking and comfort systems, removing and installing (Page 57-33)



14 - Door lock - F220 -

- ◆ Door lock is secured to assembly carrier (left)
- ◆ Electric central locking is integrated into door lock module
- ◆ Removing:

⇒ [Repair Manual, Body-Interior, Repair Group 70](#) Door trim, removing and installing

- Remove door lock ⇒ [Page 57-16](#).

15 - Door control module - J386 -

- ◆ For comfort system only
- ◆ Integrated into electric window motor (left)
- ◆ Removing:

- Removing door trim

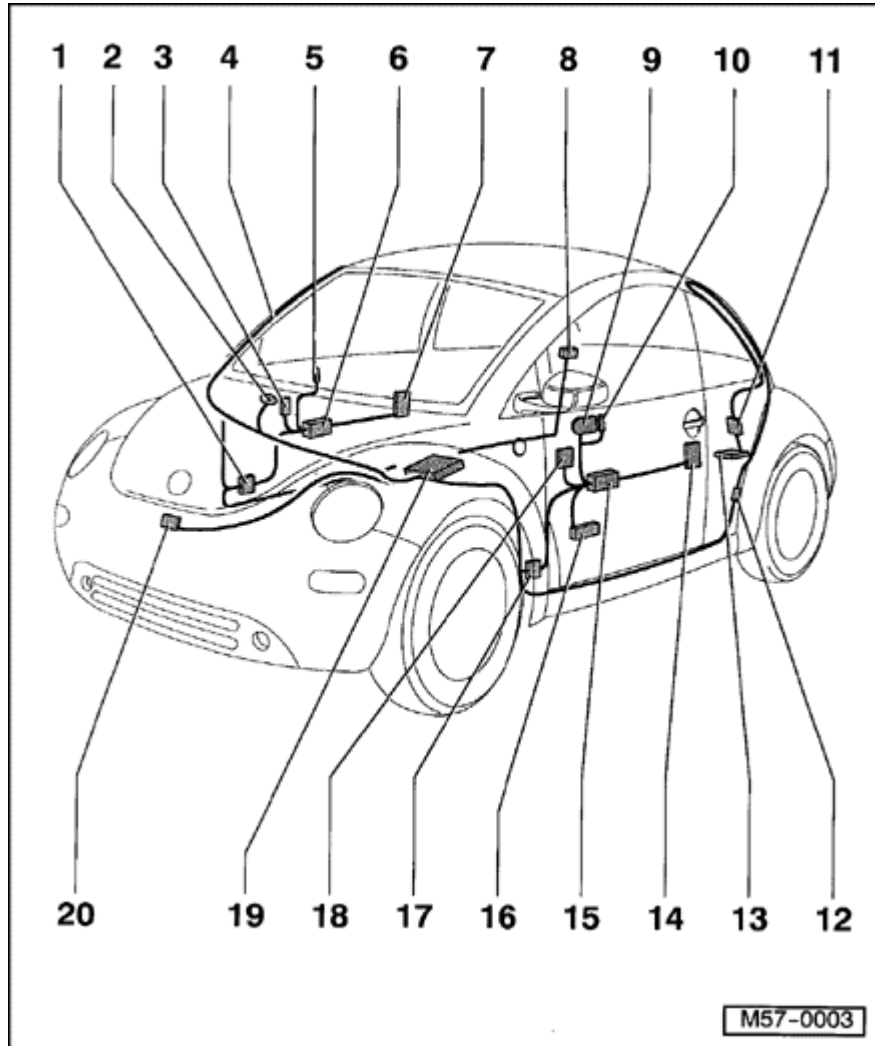
⇒ [Repair Manual, Body-Interior, Repair Group 70](#) Door trim, removing and installing

- Remove window motor.

Volkswagen New Beetle

Body - Exterior

Central locking and comfort systems, removing and installing (Page 57-34)



16 - Switch rear lid remote - E188 - and fuel tank door remote - E204 -

- ◆ Located in left door under trim

- Removing door trim

⇒ [Repair Manual, Body-Interior, Repair Group 70](#) Door trim, removing and installing

17 - Coupling station

- ◆ Installation position: Lower A pillar, covered by trim in footwell

- Removing left A pillar lower trim

⇒ [Repair Manual, Body-Interior, Repair Group 70](#) Pillar and side panel trim, removing and installing

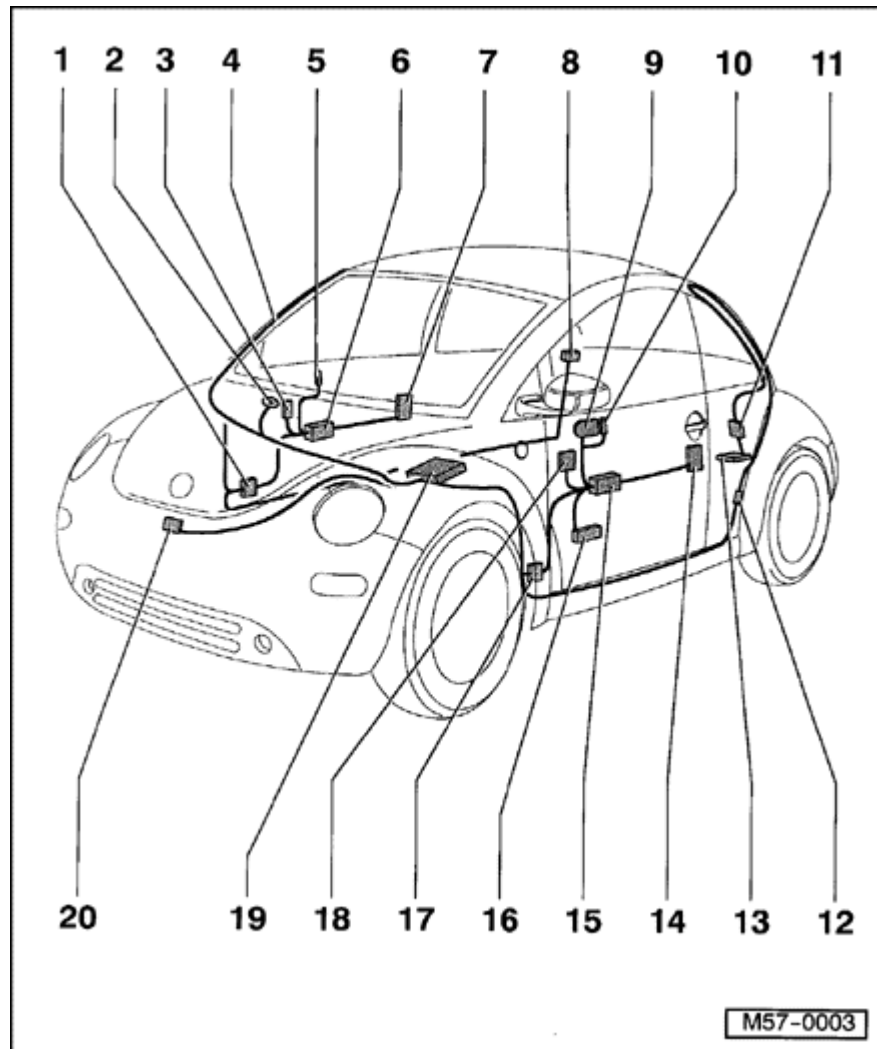
18 - Switch window regulator - E40 -

- ◆ For comfort system (left and right)

Volkswagen New Beetle

Body - Exterior

Central locking and comfort systems, removing and installing (Page 57-35)



19 - Central Control Module - J393 -

- ◆ On steering column under instrument panel
- ◆ To access, remove lower steering column trim first

⇒ [Repair Manual, Body-Interior, Repair Group 68](#) Compartments, covers and trim, removing and installing

20 - Switch hood alarm - F120 -

- ◆ Contact switch for ATA
- ◆ Installation position: In lock carrier